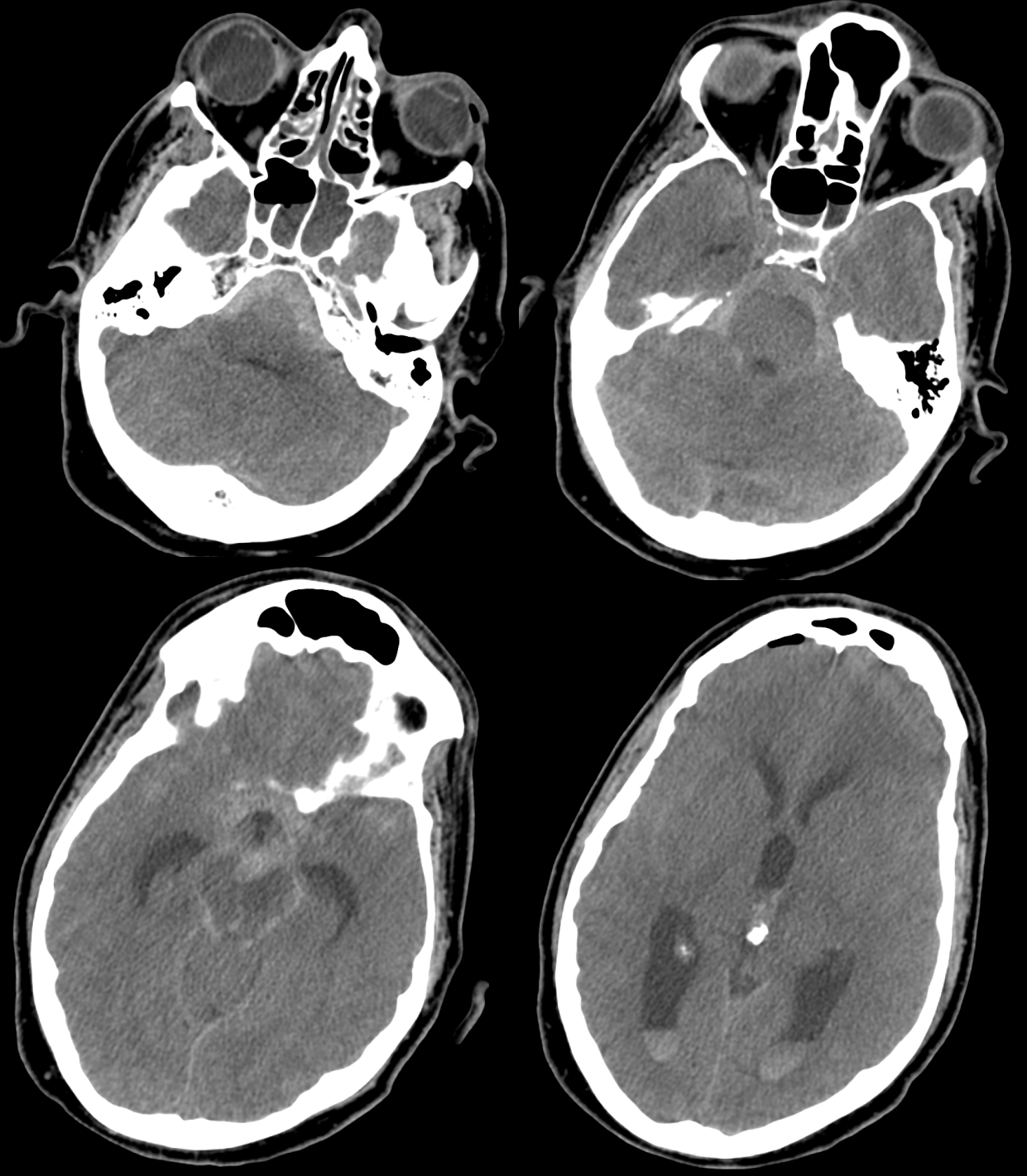


# Caso aneurisma top de la a. basilar

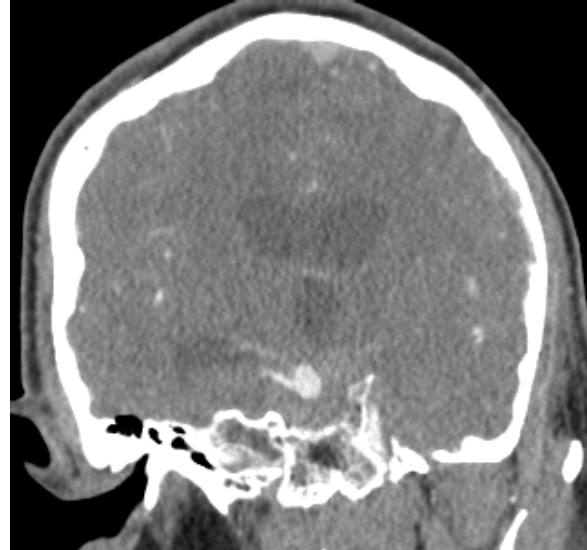
- Varón de 50 a con pérdida súbita de conciencia.
- Antecedentes Personales:
  - síndrome de Klinefelter (47XXY)
  - Portador VHC
- Sedado con anisocoria izquierda con midriasis arreactiva.
- TC basal + angio TC: HSA masiva Fisher IV con aneurisma en el top de la arteria basilar.

TC basal

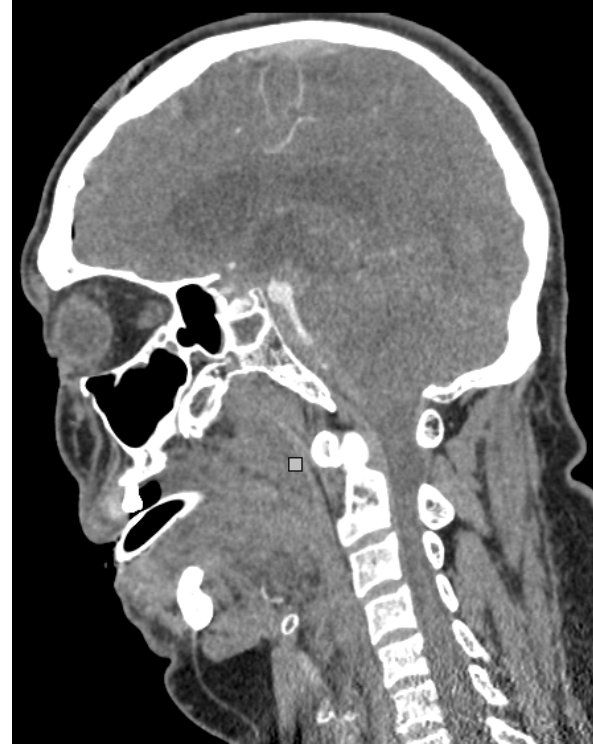
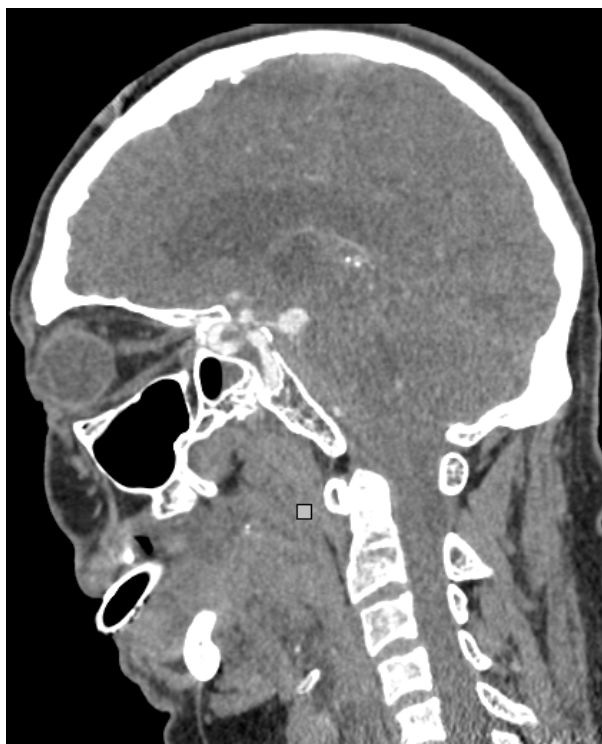




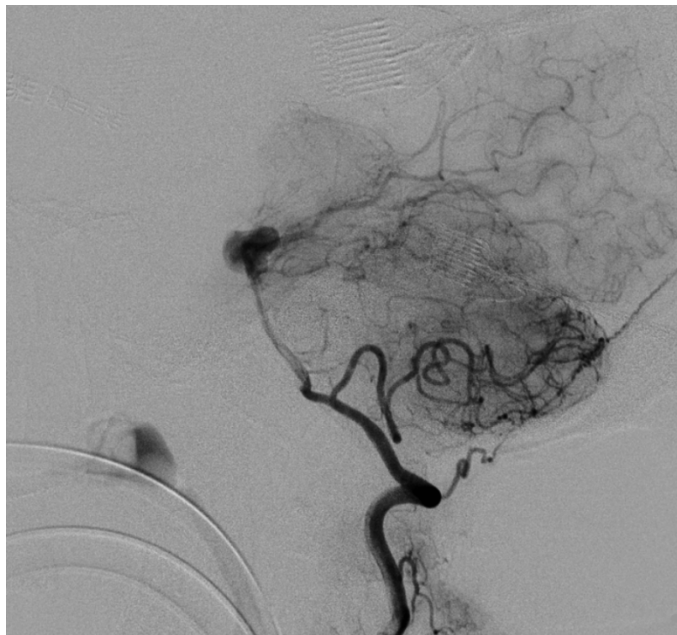
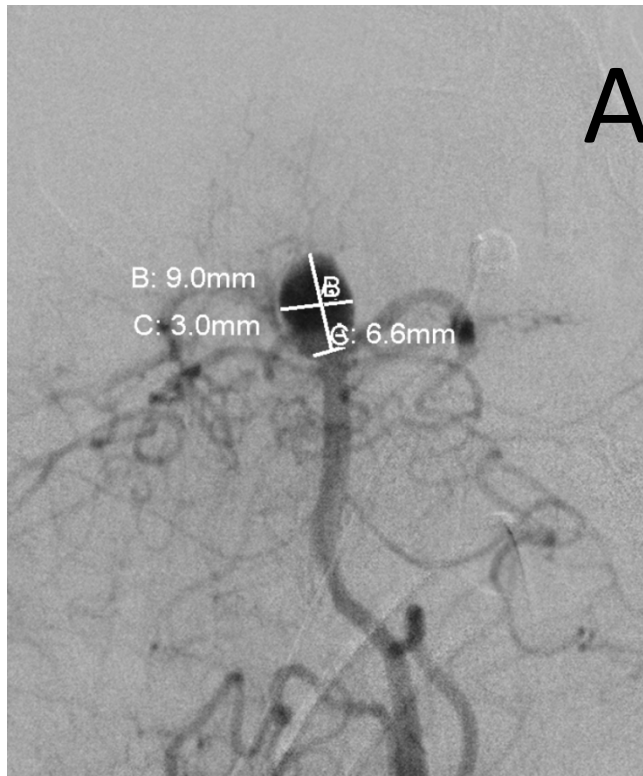
AngioTC



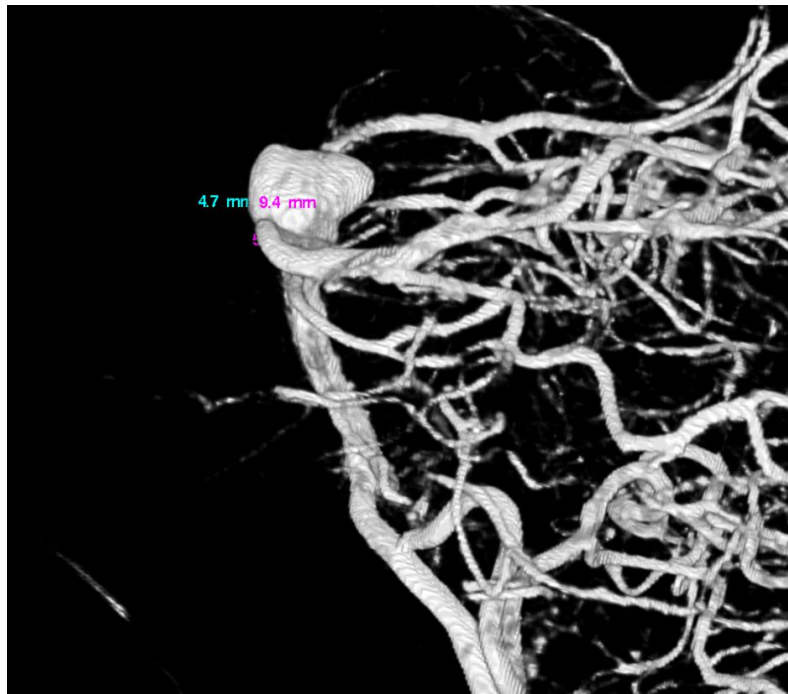
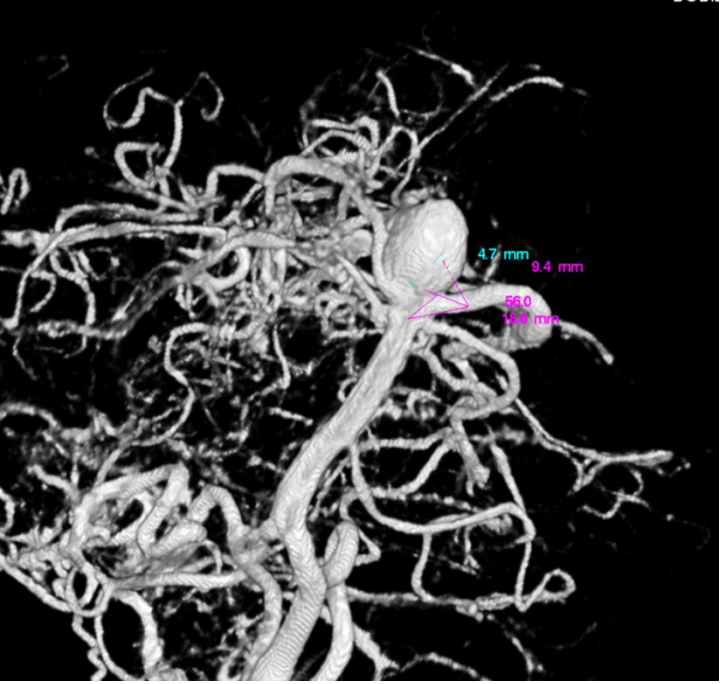
# AngioTC



# Arteriografía



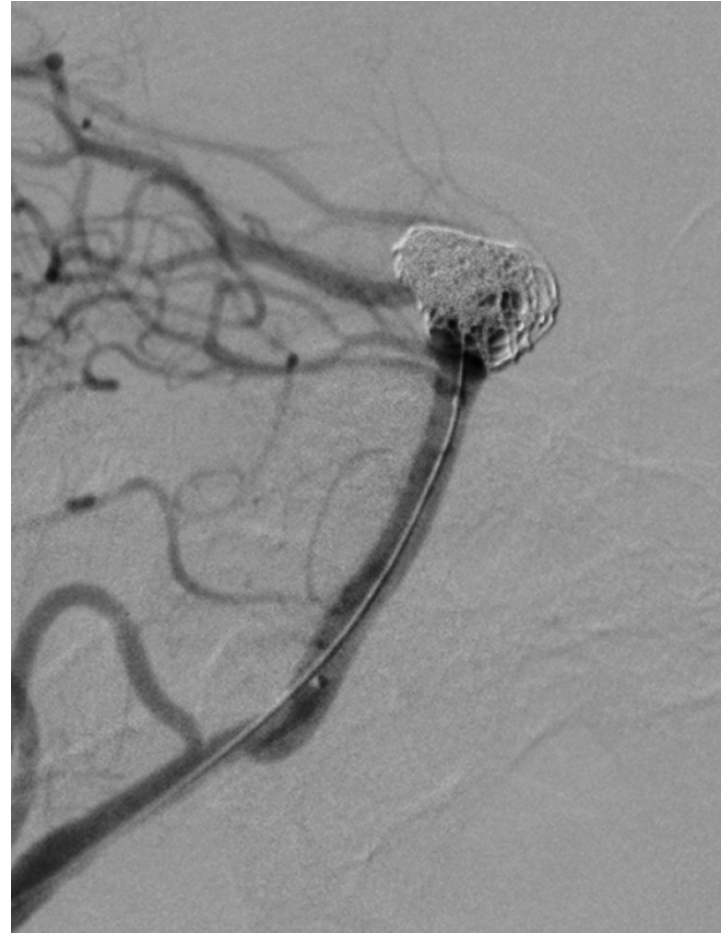
# 3D



# Embolización



# Embolización





Control  
final

